

## Ecological aspects of edaphic grubs (Coleoptera: Scarabaeoidea: Melolonthidae) in tropical forested and intervened ecosystems of the Northeast Colombian Andes\*\*

Alfonso Villalobos-Moreno<sup>1</sup>, Luis Carlos Pardo-Locarno<sup>2</sup>, Francisco José Cabrero-Sañudo<sup>3</sup>


### Abstract


**Objective.** To establish the variation of the diversity, density and biomass of white grubs of the Melolonthidae family in soils affected by mining and in the soil of an oak forest in the upper basin of the Surata river (Santander, Colombia). **Scope.** To analyse the diversity, density and biomass of the immature stages of beetles (Coleoptera: Melolonthidae) on two soil uses: recovered gold exploration platforms and an oak forest. **Methodology.** Monthly quadrants of 1 m<sup>2</sup> by 30 cm deep were made throughout 12 months of sampling. The area of study is located in the northeast Colombian Andes, between 2,300 and 2,950 meters above sea level. Correlations were established between the measured parameters (abundance, richness of species, biomass, density and numbers of Hill) and biophysical factors of the study area. **Main results.** The highest values were observed in the oak forest: 12 species, 6.16 gr/m<sup>2</sup> and density 4.08 ind/m<sup>2</sup>. However, only the biomass values were statistically significant ( $Z= 2.903$ ;  $p= 0.004$ ). Significant correlations were observed between abundance, density and biomass with the lowest humidity in the platforms but not in the oak forest. The maximum values of abundance, density and biomass coincided with the rainy season, and the highest values of diversity occur at the end of the dry seasons. **Conclusions.** The data obtained in this high mountain ecosystem show interesting variations in abundance and richness, which can be explained by the presence of a wide and extensive matrix of oak forest that allows the permanence of species of white grubs and relatively well-preserved natural populations.


**Key words:** White grubs; immature; density; biomass; biophysical factors; GLM.

\* FR: 25-VIII-2020. FA: 23-XI-2020.

\*\* This paper is a part of doctoral thesis: Beetles (Coleoptera: Melolonthidae) in an oak forest of Regional Natural Park of Santurban, Santander, Colombia.

<sup>1</sup> PhD. Director Grupo de Investigaciones Entomológicas y Ambientales – GENA. Bucaramanga. Santander, Colombia. E-mail: avillalobosmo@unal.edu.co  orcid.org/0000-0003-1713-7823 **Google Scholar**

<sup>2</sup> PhD. Universidad del Pacífico, Buenaventura. Investigador Instituto Vallecaucano de Investigaciones Científicas. Palmira, Colombia. E-mail: pardolc@gmail.com  orcid.org/0000-0002-4464-9771 **Google Scholar**

<sup>3</sup> PhD. Universidad Complutense de Madrid. Departamento de Zoología y Antropología Física. Madrid, España. E-mail: fjcabrero@bio.ucm.es  orcid.org/0000-0001-8477-3593 **Google Scholar**



### CÓMO CITAR:

Villalobos-Moreno, A., Pardo-Locarno, L. C. & Cabrero-Sañudo, F. J. (2021). Ecological aspects of edaphic grubs (Coleoptera: Scarabaeoidea: Melolonthidae) in tropical forested and intervened ecosystems of the Northeast Colombian Andes. *Bol. Cient. Mus. Hist. Nat. U. de Caldas*, 25(1): 161-176. <https://doi.org/10.17151/bccm.2021.25.1.10>



## Aspectos ecológicos de larvas edáficas (Coleoptera: Scarabaeoidea: Melolonthidae) en ecosistemas tropicales boscosos e intervenidos del nororiente de los Andes colombianos

### Resumen

**Objetivo.** Establecer la variación de la diversidad, densidad y biomasa de las chisas de la familia Melolonthidae en suelos afectados por minería y en suelo de un bosque de roble en la cuenca alta del río Suratá (Santander, Colombia). **Alcance.** Analizar diversidad, densidad y biomasa de los estados inmaduros de escarabajos (Coleoptera: Melolonthidae) en dos usos del suelo: plataformas de exploración aurífera recuperadas y un robleal. **Metodología.** A lo largo de 12 meses de muestreo se realizaron cuadrantes mensuales de 1 m<sup>2</sup> por 30 cm de profundidad. El área de estudio se localiza en el nororiente de los Andes colombianos, entre los 2.300 y 2.950 msnm. Se establecieron correlaciones entre los parámetros medidos (abundancia, riqueza de especies, biomasa, densidad y números de Hill) y los factores biofísicos de la zona de estudio. **Resultados principales.** Los mayores valores fueron observados en el robleal: riqueza 12 especies, biomasa 6,16 gr/m<sup>2</sup> y densidad 4,08 ind/m<sup>2</sup>. Sin embargo, solo los valores de biomasa fueron estadísticamente significativos ( $Z = 2,903$ ;  $p = 0,004$ ). Se observaron correlaciones significativas entre abundancia, densidad y biomasa con la humedad más baja en las plataformas pero no en el robleal. Los valores máximos de abundancia, densidad y biomasa coinciden con las temporadas de lluvia y los mayores valores de diversidad ocurren al final de las temporadas secas. **Conclusiones.** Los datos obtenidos en este ecosistema de alta montaña presentan interesantes variaciones de abundancia y riqueza, lo cual puede ser explicado por la presencia de una amplia y extensa matriz de bosque de roble que permiten la permanencia de especies de chisas y poblaciones naturales relativamente bien conservadas.

**Palabras clave:** Chisas; inmaduros; densidad; biomasa; factores biofísicos; GLM.

### Introduction

The biologic, ecologic and economic aspects of edaphic grubs of the family Melolonthidae (*sensu* Endrödi, 1966) (Cherman & Morón, 2014; Kohlmann & Morón, 2003) makes them a global interest group (Morón, 2001; Otavo et al., 2013; Reyes-Novelo & Morón, 2005; Smith, 2003). Many species have been object of basic y applied studies to establish the trophic interactions, impacts on the nutrients cycle, biodiversity and agricultural impacts, but also, to value anthropogenic effects on wild or intervened habitats, addressing comparative variation of its basics attributes (diversity, biomass, density) to explore ecological responses that are difficult to measure directly (Kremen, 1992; Kremen et al., 1993; Lawton et al., 1998; Márquez et al., 2013; Micó et al., 2000; Morón, 1997, 2001; Ocampo, 2008; Pardo-Locarno, 2002, 2013; Pardo-Locarno et al., 2006a, 2006b, 2011; Ulyshen & Wagner, 2013).

Groups or food guilds of edaphic macrofauna can be used to explore environmental aspects of the natural environment or a part of this (forest, biotopes, successional states, soil), so, when biological and ecological aspects are examined, ecological responses can be hypothesized, expressed these in diversity, abundance or biomass and its comparative variation (Ahrens et al., 2009; Cabrera, 2012; Cabrera et al., 2011a, 2011b; Krebs, 1985; Marín et al., 2001; Morón, 1997, 2001; Nichols et al., 2007; Pardo-Locarno, 2009; Pashanasi, 2001; Ruíz, 2007; Ruíz & Posada, 1985; Villalobos et al., 2000). The food guilds used must have attributes that facilitate their study and monitoring, such as biological and ecological records, to be relatively diverse, to have protocols of collection, manipulation and identification, and if possible, have a differential response in guild attributes and habitats (Brown, 1997; McGeoch, 1998; McGeoch et al., 2002).

In Colombia, the study of basic ecological parameters of white grubs is recent, these study has focused in richness of species, distribution and abundance, in part, on agricultural soils, especially in coffee and other crops in Andean regions (Álvarez et al., 1992; Campos & Fernández, 2002; Morón, 1997; Pardo-Locarno, 2002; Pardo-Locarno et al., 2003a, 2003b, 2003c, 2005). Other investigations have explored the diversity of white grubs in the alluvial plain of the Cauca river valley, in intervened habitats (sugarcane, pasture and forest relict), observing trends concerning the management and soil use (Pardo-Locarno, 2009, 2013). However, any studies in the agricultural environments present little information about the behavior of the Melolonthidae beetles in Colombian agroecosystems and, especially, in wild tropical environments. The present research establishes the variation of the diversity, density and biomass of white grubs of family Melolonthidae in soils intervened by mining and in oak forest soil in Surata river upper basin (Santander, Colombia).

## Materials and methods

### Study zone

The samplings was made in mining platforms product of gold exploration and a secondary forest with dominance of *Quercus humboldtii* Bonpland, 1805. It is located in the Surata river upper basin, municipality of California (Santander, Colombia) (Fig. 1) between 2,300 and 2,950 masl. The study zone corresponds to an Andean oak forest with trees in different stages of the life cycle and many elements that indicate good conservation, like Bromeliaceous, Araceous, bryophytes and epiphytic plants (Cuatrecasas, 1989; Gualdrón et al., 2012). Regarding physical conditions, the study zone presents two rain seasons (April–May and September–November), and two dry seasons (December–March and June–August); October presents the highest rainfall levels and January has lowest rainfall levels during the year. The weather is cold humid or cold very humid with the mean annual rainfall of 1,000–1,200 mm, the temperature

is 12–18°C and the RH is 85–100% (Alcaldía Municipal de California en Santander, 2010; Agronet, 2013). The soils are andisols formed by volcanic ash deposited on sedimentary and igneous rocks. The relief corresponds to big ridges and escarpments with relatively thick textures, which determine a high permeability, good aeration, and capacity low of water storage (Gobernación de Santander, 2011).



**Figure 1.** Localization of study zone. Municipality of California, Santander, Colombia. Source: adapted from Google Earth Pro.

## Edaphic beetles sampling

Monthly, we randomly select 12 platforms with at least two years of recovery, while the 12 sites in the oak forest were selected by closeness to each platform, at not less than 50 meters. At each selected site was made a quadrant of 1 m<sup>2</sup> x 0.3 m (Pardo-Locarno et al., 2005, 2006b; Serna-Patiño, 2004; Villegas et al., 2008), for a total 24 quadrants/month and 288 quadrants/year. The quadrant standardization was made with a wooden frame (Fig. 2) (Pardo-Locarno et al., 2006b). The specimens collected were washed with fresh water, and weighed with a digital scale (PocketScale MH 200; 200 gr, d = 0.01) to establish the biomass, which quantified in grams/m<sup>2</sup>. The density was quantified in number of individuals/m<sup>2</sup>. The collected material was preserved in bottles with a solution of alcohol-formaldehyde 10% (Pardo-Locarno et al., 2005).



**Figure 2.** Sampling of white grubs in California, Santander. A: oak forest; B: platform; C: extraction and collection; D: some larvae collected. Source: Alfonso Villalobos-Moreno.

### Analysis of inventory quality

An analysis of sampling effort examined the degree of knowledge reached during fieldwork, considering the observed richness and thus, to predict the potential richness of the zone. The data used for the effort-sampling units (ESU) were the sum of the monthly collections, so that, being an annual study, we considered 12 ESU. Using the EstimateS program (Colwell, 2000), data entry was randomized (1,000 iterations) to avoid bias in the estimation of potential richness. To predict the potential richness, we used the nonparametric statistic Chao 1 (based in abundance), because it is a robust estimator of the minimum richness, and offers better results than with other estimators (Gotelli & Colwell, 2001; Walther & Moore, 2005). With CurveExpert program (Hyams, 2009), the estimates were adjusted to an asymptotic curve of Clench, and thus, to calculate the different parameters of the curve (Jiménez-Valverde & Hortal, 2003).

### Seasonal diversity

Using the observed values for abundance and richness, we established for each sampling month, the values of potential richness:  $q_0$ , diversity of order 1:  $q_1$  (exponential of Shannon-Wiener index:  $eH'$ ) and diversity of order 2:  $q_2$  (inverse of Simpson index:  $1/D$ ) (Jost, 2006). To obtain the potential richness ( $q_0$ ) a procedure similar to the

analysis of sampling effort was carried out, this process required the EstimateS programs (Colwell, 2000) for the randomization of data entry and use of non-parametric estimators Chao 2 (based on incidences) and CurveExpert (Hyams, 2009) for the adjustment to the asymptotic curve Clench. To obtain  $q1$  and  $q2$ , Spade program (Chao & Shen, 2009) was used, because offers these values with their standard deviations. Correlation analysis were made with Statistica program (StatSoft Inc., 2011) to verify the degree of similarity between the different dependent variables.

### Comparison between soils uses

In order to establish differences between the measured parameters (diversity, density and biomass) in the two land uses, we use the nonparametric test of Wilcoxon ( $Z$  tests) for comparison between the dependent variables using the Statistica program (StatSoft Inc., 2011). Additional analysis to establish qualitative differences between the two land uses was made with the inventory of taxa to estimate the similarity between platforms and oak forest for each month; the abundance data by species was transformed into their  $\log(x+1)$ , then, a matrix based on Euclidean distance was obtained. Using the program Primer 6 v6.1.6 (Primer-E Ltd., 2006), a strategy of group average and a Simprof test (1,000 iterations) was applied to construct the dendrogram.

### Correlations with seasonal and biophysical factors

In order to explore the multiple relationships between the parameters measured to the edaphic grubs of the family Melolonthidae and the seasonal and biophysical variables available for the study area, generalized linear models (GLM) were used. The seasonal variable refers to sine (senm) and cosine (cosm) of day of the year, starting the year on March 21, with the spring equinox, and adjusting the 365 days to a year of 360, to use the trigonometric functions. This variable can report possible changes in abundance and richness of species that may occur in the year. Thus, when senm is positive, it is related to the period between the spring and autumn equinoxes, and when senm is negative, it is associated with the period between the autumn and spring equinoxes. When cosm is positive, it is related to the period between the winter and summer solstices, and when cosm is negative, it is associated to the period between the summer and winter solstice. The biophysical variables used were those available in the meteorological stations for the study zone. We use temperature (absolute low, absolute high, mean, mean of the low, mean of the high), rainfall (low, high, mean, accumulated, rainfall days), RH (low, high and mean), solar radiation (high and mean) and UV index (high and mean).

To establish the level of significance of each related factors, values of  $F$  were calculated for  $p = 0.05, 0.01$  and  $0.001$ . The goodness of fit of the models obtained was measured by the deviance, while the change in the deviance was made through an  $F$  test and the

reduction in deviance was compared with the complete model. Finally, an analysis of deviance partition was done (Legendre & Legendre, 1998) to establish the percentage of variation explained by each effect, both pure and combined, of different seasonal and biophysical variables.

## Results

We collected 970 specimens in different larval stages, belonging to 12 species. They were represented by the subfamilies Melolonthinae (56.1%), Dynastinae (20.3%), Rutelinae (22.4%) and Cetoniinae (1.2%). The most abundant species were *Phyllophaga obsoleta* Blanchard, 1850 (194), *Isonychus* sp. (188) and *Platycoelia* sp. (183), while the species with lower abundance were *Macroductylus* sp. (16) and *Euphoria hera* Burmeister, 1842 (12) (Table 1).

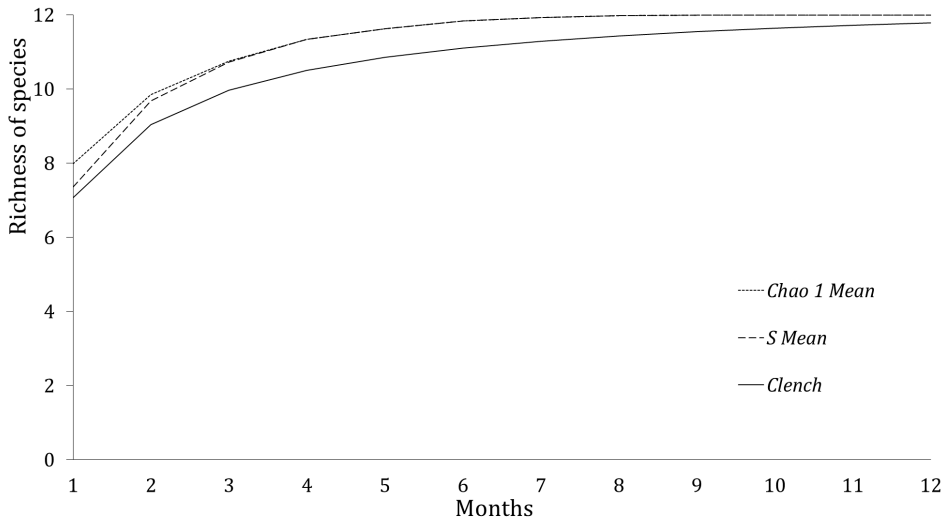
**Table 1.** Monthly abundance of larvae of family Melolonthidae collected in mining platforms and oak forest in California, Santander

TAXA	Sep	Oct	Nov	Dec	Jan	Feb	Mar	Apr	May	Jun	Jul	Aug	Total
<i>Phyllophaga obsoleta</i> Blan. 1850	23	42	36	11	1	2	0	0	1	13	23	43	195
<i>Isonychus</i> sp.	48	47	37	11	0	6	8	1	5	1	20	4	183
<i>Platycoelia</i> sp.	12	34	58	21	0	0	0	1	0	0	0	57	183
<i>Golofa eacus</i> Burmeister, 1847	0	1	0	4	1	4	3	4	0	11	28	37	93
<i>Manopus biguttatus</i> Laporte, 1854	4	1	2	5	0	6	27	16	16	1	4	1	83
<i>Astaena</i> sp.	1	2	14	1	0	12	20	6	2	4	0	0	62
<i>Ancognatha</i> sp.	0	2	0	0	26	0	2	2	2	3	0	1	38
<i>Lycomedes salazari</i> P., V., S., 2015	2	0	2	7	1	0	1	1	2	0	9	10	35
<i>Anomala</i> sp.	4	5	0	0	0	0	0	8	0	8	0	9	34
<i>Cyclocephala</i> sp.	0	17	6	0	0	0	0	0	0	8	0	0	31
<i>Macroductylus</i> sp.	0	0	3	2	0	1	0	0	7	2	0	1	16
<i>Euphoria hera</i> Burmeister, 1842	0	0	0	0	0	0	0	2	3	7	0	0	12

Source: Alfonso Villalobos-Moreno

## Check inventory quality

The estimated potential richness according to the adjustment to the Clench curve reached 11.78 taxa (Fig. 3). The slope of the curve was 0.06 and the observed species proportion was 95.66%, which corresponds to an estimated sampling effort of 93.94%, these characteristics allowed to consider the quality of the inventory as appropriate.

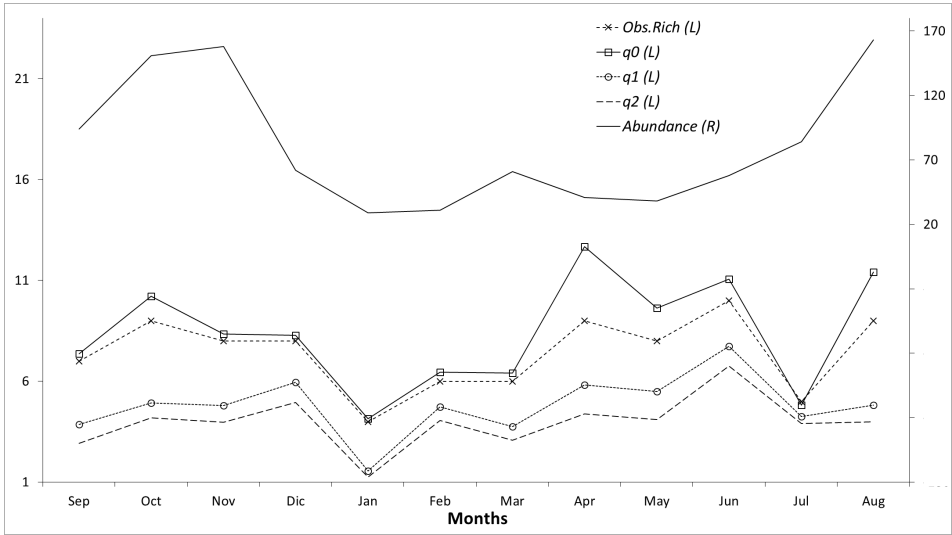


**Figure 3.** Analysis of inventory quality. *S Means*: randomized observed richness curve; *Chao 1 Means*: potential richness curve obtained with the nonparametric estimator Chao 1; *Clench*: curve adjusted to the asymptote Clench [ $y = 16.21 \cdot x / (1 + 1.29 \cdot x)$ ]; standard error: 0.334; correlation coefficient: 0.975. Source: Alfonso Villalobos-Moreno.

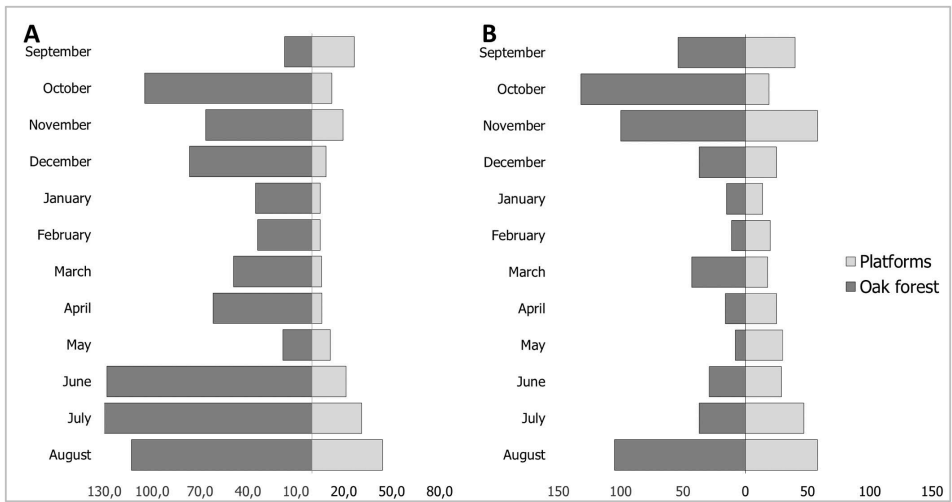
## Temporal diversity

The figure 5 shows the temporal variations of the abundance, observed richness of species, and potential richness ( $q0$ ), and effective richness of species ( $q1$ ) and richness of dominant species ( $q2$ ). The highest abundance occurs in October, November and August, while for the others variables of diversity the highest levels are in April and June. The lowest levels for all variables occurs in January, coinciding with the period of greatest drought (Fig. 4). Statistical analysis do not show a clear relationship between abundance and the other variables.





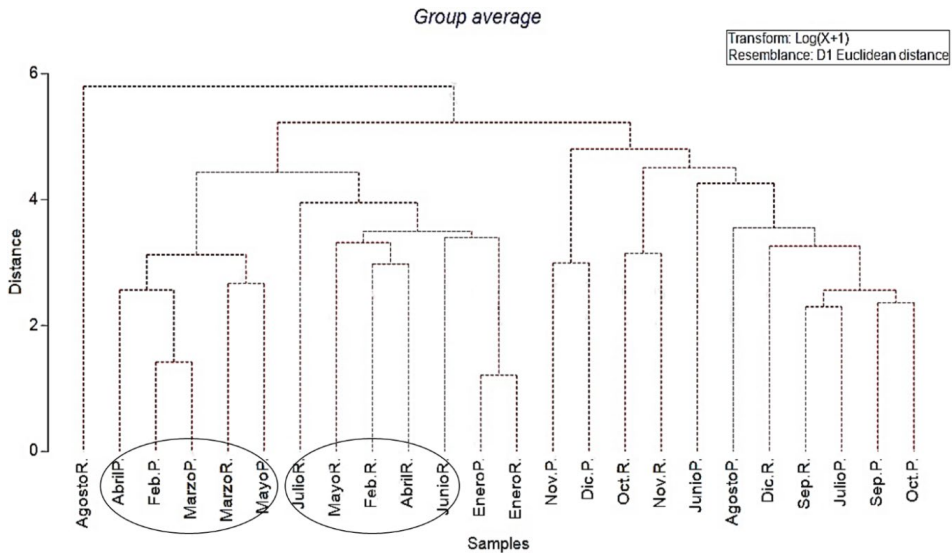
**Figure 4.** Temporal variation of the dependent variables. Left axis (L) corresponds to richness values and right axis (R) to abundance. Source: Alfonso Villalobos-Moreno.



**Figure 5.** Comparison of density (A) and biomass (B) for sampling soil uses. Source: Alfonso Villalobos-Moreno.

## Comparison between soils uses

Media biomass of edaphic grubs of family Melolonthidae in oak forest soil was 6.16 gr/m<sup>2</sup> ( $\pm 10.85$ ) and in platform was 1.38 gr/m<sup>2</sup> ( $\pm 2.78$ ), while media density in oak forest soil was 4.08 ind./m<sup>2</sup> ( $\pm 5.7$ ) and in platforms was 2.66 ind./m<sup>2</sup> ( $\pm 4.77$ ). The observed richness for both soil uses was similar, 12 species in the oak forest and 11 in platforms, being *G. eacus* Burmeister the only species that is not shared. Figure 6 shows the comparison of density and biomass in soil uses during sampling months. The analysis of similarity between localities and months give a dendrogram where the conformation of some groups is appreciated, showing some differences between the soils uses (Fig. 5). The group formed for the platforms stands out for February, April and May, and for the oak forest, for February, April, May, June and July. The analysis shows differences between platforms and oak forest for August and July. There were no differences between platforms and oak forest for the months of January, September, October, November and December (Fig. 6). However, the Simprof analysis stands out that have not seem to be significant differences in the composition of the inventories by month and location, so in principle, all the inventories would be part of the same community of species.



**Figure 6.** Similarity analysis between sampling soil uses and month. Discontinue lines defines significant groups. P: platform; R: oak forest. Source: Francisco Cabrero-Sañudo.

## Correlations with seasonal and biophysical factors

To establish relations between the measured variables and the environmental parameters of the study area, Generalized Linear Models (GLM) were used. These analyses allowed affirming that exist significant correlations (negatively) between lower humidity with the abundance, the density and the biomass of platforms. There is also a relation of seasonality in platforms with abundance, density, biomass and diversities of order 1 and 2. In addition, correlations between seasonality with abundance and density in oak forest was observed (Table 2). There would be more abundance, density and biomass between summer and winter solstices than in the other half year, while there would be more diversity of order 1 and order 2 between spring and autumn equinoxes. The highest values of abundance, density and biomass would have coincided with the rainy season, that is, with the season of highest primary production. The highest values of diversity occurs at the end of the dry season and the beginning of the rainy season, probably as result of the fact that the communities are more stable during this period. Since at other seasons of the year some species have population peaks that increase their relative frequencies in the community, thus decreasing the effective and dominant species richness ( $q_1$  and  $q_2$ , respectively). For all dependent variables, except observed and potential richness, seasonal and biophysical factors explain between 35% and 55% (Table 2), which prove the importance of these factors in the variation of this biodiversity in the study zone. The biophysical factors alone (pure effect) cannot explain this variation, but can do it the seasonal factors (pure effect) and its combined effect with the biophysical factors. The above corroborates the importance of the phenology of the species and their association with conditions that change throughout the annual cycle (photoperiod, primary production, etc.).

**Table 2.** Summary of GLM. *Ab*: abundance; *Rob*s: observed richness; *q0*: potential richness; *q1*: diversity of order 1; *q2*: diversity of order 2; *BM*: biomass; *D*: density; *P*: platform; *R*: oak forest; *Rsm*ax: higher solar radiation; *Tmin*: lower temperature; *Hdmin*: lower humidity; *senm*: senn of date; *cosm*: cosenn of date. Signification: !( $p < 0.1$ ), \*( $p < 0.05$ ), \*\*( $p < 0.01$ ). Sense of relationship: +/-

Variable	<i>AbP</i>	<i>Rob</i> sP	<i>q0P</i>	<i>q1P</i>	<i>q2P</i>	<i>BMP</i>	<i>DP</i>
<i>Tmin</i>		27.14% ! +		28.10% ! +	28.53% ! +		
<i>Hdmin</i>	36.28% * -					32.82% * -	36.28% * -
<i>Senm</i>				35.07% * +	44.28% * +		
<i>Cosm</i>	43.58% * -					54.35% ** -	43.58% * -
Full Model	43.58%	0.00%	0.00%	35.07%	44.28%	54.35%	43.58%
Biophysic effect	0.00%	0.00%	0.00%	0.00%	0.00%	0.00%	0.00%
Seasonal effect	7.30%	0.00%	0.00%	35.07%	44.28%	21.53%	7.30%
Combined effect	36.28%	0.00%	0.00%	0.00%	0.00%	32.82%	36.28%
Variable	<i>AbR</i>	<i>Rob</i> sR	<i>q0R</i>	<i>q1R</i>	<i>q2R</i>	<i>BMR</i>	<i>DR</i>
<i>Tmax</i>				27.83% ! -	24.93% ! -		
<i>Rsm</i> ax	28.20% ! +						28.20% ! +
<i>Senm</i>							
<i>Cosm</i>	55.08% ** -						55.08% ** -
Full Model	55.08%	0.00%	0.00%	0.00%	0.00%	0.00%	55.08%
Biophysic effect	0.00%	0.00%	0.00%	0.00%	0.00%	0.00%	0.00%
Seasonal effect	55.08%	0.00%	0.00%	0.00%	0.00%	0.00%	55.08%
Combined effect	0.00%	0.00%	0.00%	0.00%	0.00%	0.00%	0.00%

Source: Francisco Cabrero-Sañudo

## Discussion

Although the ecological importance of edaphic beetles is unquestionless, not much researchs in wild environmets of high Colombian montains has been done. Some investigations affirm that for decades the study of “chisa complex” in cold regions has been almost unchanged, and only five species of the genus *Ancognatha* Erichson, 1847, *Clavipalpus* Laporte, 1832, *Manopus* Laporte, 1840 and *Heterogomphus* Burmeister, 1847 have been studied (Apolinar-María, 1927; Ruíz & Pumalpa, 1990). However, recent sampling has expanded the complex to 26 species in high Andean ecosystems on departments of Cundinamarca, Boyacá and Nariño, with an accumulated record of eighth in Savanna of Bogotá, nine in Nariño highlands and 20 in Tunja higlands (Pardo-Locarno et al., 2007). Large populations of white grubs has been observed in potato, vegetable, wheat crops and pastures of Yacuanquer and Ospina (Nariño) wich 80–120 ind./m<sup>2</sup>; *Ancognatha* sp. and *Astaena* sp. were the most abundant (Peña et al., 2003). Sampling on Portachuelo and Totoró (Cauca) show variations between 0–41 larvae/m<sup>2</sup>, which include five species with saprophagus and rhizophages habits, including *Astaena* sp., *Clavipalpus* sp., *Ancognatha scarabaeoides* Erichson, 1847

and *Macroductylus* sp. (Piedrahita & Pardo-Locarno, *en prep.*). Investigations in oak forest of Mexican high-mountains (Teziutlán, Puebla) found a density of 0.23 ind./m<sup>2</sup> and a richness of nine morfoespecies, and in pine forest in Izta-Popo National Park found 1,25 ind./m<sup>2</sup> and 3 morfoespecies (García et al., 2016), values much lower than those of the current study. The data obtained in high Andean ecosystem of Santurban show interesting variations of abundance and richness, explained by the presence of an extensive oak forest matrix, which has allowed the permanence of white grubs species and well-preserved natural populations

Regarding relationships with environmental factors, the analysis shows that the increase in the minimum humidity in the platforms, decrease the abundance, density and biomass of white grubs, as reported for the abundance of edaphic macrofauna by Suárez et al. (2015), Pardo-Locarno (2013) and Zebino et al. (2008), as well as for termites, worms and diplopods (Pardo-Locarno et al., 2007). Some studies carried out in coffee agroecosystems in Cauca (Colombia) showed variations in richness and abundance of *chisa* complex, explained, in part, by changes in humidity and temperature, that force the larvae to migrate to deeper horizons and to pupate closer to rainy seasons (Pardo-Locarno, 2002).

## Conclusions and recommendations

The sampling in the two soil uses (P: platforms; R: oak forest) showed differences between biomass (R: 6.16gr/m<sup>2</sup>; P: 1.38gr/m<sup>2</sup>), density (R: 4.08ind/m<sup>2</sup>; P: 2.66ind/m<sup>2</sup>), abundance (R: 575; P: 395) and richness of species (R: 12 especies; P: 11 especies), which shows the good response of this group to soil recovery processes on mining platforms in the study zone. Only the Wilcoxon test showed significant differences for the biomass ( $Z= 2.903$ ;  $p= 0.004$ ) (Table 3). The minimum humidity is related with the abundance, density and biomass on platforms, as well as, some seasonal variables in the platforms and the oak forest. Sampling on platforms is recommended in a couple of years, when the vegetation and soil structure are in a more advanced state of recovery.

**Table 3.** Summary of Wilcoxon test. *Ab*: abundance; *Biom*: biomass; *Dens*: density; P: platform; *q0*: potential richness; *q1*: diversity of order 1; *q2*: diversity of order 2 R: oak forest; *Robs*: observed richness

Variables	Valid	T	Z	p-value
<i>Ab.P</i> & <i>Ab.R</i>	12	27.00000	0.941357	0.346522
<i>Robs.P</i> & <i>Robs.R</i>	12	23.00000	1.255143	0.209428
<b><i>Biom.P</i> &amp; <i>Biom.R</i></b>	<b>12</b>	<b>2.00000</b>	<b>2.902519</b>	<b>0.003702</b>
<i>Dens.P</i> & <i>Dens.R</i>	12	27.00000	0.941357	0.346522
<i>q0P</i> & <i>q0R</i>	12	27.00000	0.941357	0.346522
<i>q1P</i> & <i>q1R</i>	12	24.00000	1.176697	0.239317
<i>q2P</i> & <i>q2R</i>	12	20.00000	1.490483	0.136098

Source: Francisco Cabrero-Sañudo

## Acknowledgements

Thanks to COLCIENCIAS for the support of doctoral studies of first author (Call 727 National PhDs). To William Sarmiento Gómez, William Pérez, Leydy Viviana Gélvez, Sonia Marcela Toloza, Abelardo Rojas Ochoa and Environmental Sustainability Group of MINESA. Special thanks to Estefanía Micó of Iberoamerican Center of Biodiversity (CIBIO) of Alicante University, for the corrections to this manuscript. Thanks to John Jairo Díaz and Inés Johanna Gómez. To Daniel Padilla and Daniel “Hawk” Ramírez for the important comments and analysis. Second author thanks to Pablo López Insuasty Director of CRES, for the support in the Investigations Center (CI-CRES).

## References

- Agronet - Red de Información y Comunicación Estratégica del Sector Agropecuario. (2013). *Sistema de Estadísticas*. www.agronet.gov.co/agronetweb1/ (Last access: 2-Nov-2015).
- Ahrens, D., Dhoj, Y., Lago, P. K. & Nagel, P. (2009). Seasonal fluctuation, phenology and turnover of chafer assemblages – insight to the structural plasticity of insect communities in tropical farmlands. *Agricultural and Forest Entomology*, 11, 265–274. DOI: <http://dx.doi.org/10.1111/j.1461-9563.2008.00439.x>
- Álvarez, A., Posada, L. & Martínez, O. (1992). Distribución espacial y vertical de la chisa *Clavipalpus* sp. pos. *ursinus* Blanchard. (Coleoptera: Scarabaeidae-Melolonthinae). *Agricultura Tropical*, 29(3), 54–60.
- Apolinar-María, H. (1927). Insectos nocivos en los pastos de la Sabana de Bogotá. *Boletín de la Sociedad de Ciencias Naturales de La Salle*, 90, 51–57.
- Brown, K. S. (1997). Diversity, disturbance, and sustainable use of Neotropical forests: insects as indicators for conservation monitoring. *Journal of Insect Conservation*, 1, 25–42. DOI: <http://dx.doi.org/10.1023/A:1018422807610>
- Cabrera, G. (2012). La macrofauna edáfica como indicador biológico del estado de conservación/perturbación del suelo. Resultados obtenidos en Cuba. *Pastos y Forrajes*, 35(4), 346–363. URL: [http://scielo.sld.cu/scielo.php?script=sci\\_arttext&pid=S0864-03942012000400001](http://scielo.sld.cu/scielo.php?script=sci_arttext&pid=S0864-03942012000400001)
- Cabrera, G., Robaina, N. & Ponce de León, D. (2011a). Composición funcional de la macrofauna edáfica en cuatro usos de la tierra en las provincias de Artemisa y Mayabeque, Cuba. *Pastos y Forrajes*, 34, 331–346. URL: <http://scielo.sld.cu/pdf/pyf/v34n3/pyf08311.pdf>
- Cabrera, G., Robaina, N. & Ponce de León, D. (2011b). Riqueza y abundancia de la macrofauna edáfica en cuatro usos de la tierra en las provincias de Artemisa y Mayabeque, Cuba. *Pastos y Forrajes*, 34, 313–330. URL: <http://scielo.sld.cu/pdf/pyf/v34n3/pyf07311.pdf>
- Campos, D. F. & Fernández, F. (2002). Diversidad de Insectos en Colombia. *Sociedad Entomológica Aragonesa*, 2, 297–300. URL: [http://sea-entomologia.org/PDF/M3M\\_Pribes\\_2002/297\\_300\\_Campos.pdf](http://sea-entomologia.org/PDF/M3M_Pribes_2002/297_300_Campos.pdf)
- Chao, A. & Shen, T. J. (2009). *Program SPADE (Species prediction and diversity estimation)*. <http://chao.stat.nthu.edu.tw> (Last access: 29-Jun.-2018).
- Chermain, M. A. & Morón, M. Á. (2014). Validación de la familia Melolonthidae Leach, 1819 (Coleoptera: Scarabaeoidea). *Acta Zoológica Mexicana* (n.s.), 30(1), 201–220. DOI: <http://dx.doi.org/10.21829/azm.2014.301139>
- Colwell, R. K. (2000). *EstimateS v. 6.0b1, computer program and manual*. <http://viceroy.eeb.uconn.edu/EstimateS> (Last access: 29-Jun.-2018)
- Cuatrecasas, J. (1989). Aspectos de la vegetación natural de Colombia. *Pérez-Arbeláezia*, 2(8), 155–289.
- Alcaldía Municipal de California en Santander. (2010). *EOT*. <http://www.california-santander.gov.co> (Last access 2-Nov-2017).
- García, S., Moreno, C. E. & Morón, M. Á. (2016). Densidad y biomasa de larvas de escarabajos Dynastinae (Coleoptera: Melolonthidae) en un bosque templado con manejo forestal en México. *Entomología forestal*, 3, 618–625. URL: <http://www.entomologia.socmexent.org/revista/2016/EF/Em%20618-625.pdf>
- Gobernación de Santander. (2011). *Santander 2030: Diagnóstico dimensión biofísico ambiental territorial del departamento de Santander*. Bucaramanga, Colombia: Universidad Industrial de Santander.
- Gotelli, N. & Colwell, R. K. (2001). Quantifying biodiversity: Procedures and pitfalls in the measurement and comparison of species richness. *Ecology Letters*, 4, 379–391. DOI: <http://dx.doi.org/10.1046/j.1461-0248.2001.00230.x>
- Gualdrón, J. A., Villalobos-Moreno, A., Rojas, A., Cepeda-Olave, N., Díaz, J. J., Quintero, S. L. & Prada-Duran, R. (2012). *Caracterización de los componentes de biodiversidad en áreas de influencia directa e indirecta del túnel de exploración 2 de AUX Colombia en California, Santander*. Bucaramanga, Colombia: Corporación CTAS.
- Hyams, D. (2009). *CurveExpert v1.40*. <http://www.curveexpert.net/> (Last access: 27-Sep.-2017).
- Jiménez-Valverde, A. & Hortal, J. (2003). Las curvas de acumulación de especies y la necesidad de evaluar la calidad de los inventarios biológicos. *Revista Ibérica de Aracnología*, 8, 151–161. URL: [http://sea-entomologia.org/PDF/RIA\\_8/R08-024-151.pdf](http://sea-entomologia.org/PDF/RIA_8/R08-024-151.pdf)
- Jost, L. (2006). Entropy and diversity. *OIKOS*, 113(2), 363–375. DOI: <http://dx.doi.org/10.1111/j.2006.0030-1299.14714.x>
- Krebs, C. J. (1985). *Estudio de la Distribución y la Abundancia*. México D.F.: Editorial Harla.

- Kremen, C. (1992). Assessing the indicator properties of species assemblages for areas monitoring. *Ecological Applications*, 2(2), 203-217. DOI: <http://dx.doi.org/10.2307/1941776>
- Kremen, C., Colwell, R. K., Erwin, T. L., Murphy, D. D., Noss, R. F. & Saujayan, M. A. (1993). Terrestrial arthropod assemblages: their use as indicators in conservation planning. *Conservation Biology*, 7(4), 796-808. DOI: <http://dx.doi.org/10.1046/j.1523-1739.1993.740796.x>
- Kohlmann, B. & Morón, M. Á. (2003). Análisis histórico de la clasificación de los Coleoptera Scarabaeoidea o Lamellicornia. *Acta Zoológica Mexicana* (n.s.), 90, 175-280. URL: <http://www.scielo.org.mx/pdf/azm/n90/n90a7.pdf>
- Lawton, J. H., Bignell, D. E., Bolton, B., Bloemers, G. F., Eggleton, P., Hammond, P. M., Hodda, M., Holt, R. D., Larsen, T. B., Mawdsley, N. A., Stork, N. E., Srivastava, D. S. & Watt, A. D. (1998). Biodiversity inventories, indicator taxa and effects of habitat modifications in tropical forest. *Nature*, 391, 72-76. DOI: <http://dx.doi.org/10.1038/34166>
- Legendre, P. & Legendre, L. (1998). *Numerical Ecology*. 2nd edition. Amsterdam: Elsevier Publishing.
- Márquez, J., Asiain, J., Morón, M. Á. & Hornung-L., C. T. (2013). Escarabajos gema (Insecta: Coleoptera, Melolonthidae) como indicadores del grado de conservación de los bosques del Estado de Hidalgo, México. *Interciencia*, 38(6), 410-417. URL: <https://www.interciencia.net/wp-content/uploads/2017/12/410-MARQUEZ-8.pdf>
- Marín, E. P., Feijoo, A. & Peña, J. (2001). Cuantificación de la macrofauna en un vertisol bajo diferentes sistemas de manejo en el Valle del Cauca, Colombia. *Revista Suelos Ecuatoriales*, 31(2), 233-238. URL: <http://hdl.handle.net/11554/5994>
- McGeoch, M. A. (1998). The selection testing and application of terrestrial insects as bioindicators. *Biological Reviews*, 73(2), 181-201. DOI: <http://dx.doi.org/10.1111/j.1469-185X.1997.tb00029.x>
- McGeoch, M. A., Van Rensburg, B. J. & Botes, A. (2002). The verification and application of bioindicators: a case study of dung beetles in a savanna ecosystem. *Journal of Applied Ecology*, 39(4), 661-672. DOI: <http://dx.doi.org/10.1046/j.1365-2664.2002.00743.x>
- Micó, E., Smith, A. B. T. & Morón, M. Á. (2000). New larval descriptions for two species of *Euphoria* Burmeister (Coleoptera: Scarabaeidae: Cetoniniinae: Euphoriina) with a key to the known larvae and a review of the larval biology. *Annals of Entomological Society of America*, 93(4), 795-801. DOI: [http://dx.doi.org/10.1603/0013-8746\(2000\)093\[0795:NLDFTS\]2.0.CO;2](http://dx.doi.org/10.1603/0013-8746(2000)093[0795:NLDFTS]2.0.CO;2)
- Morón, M. Á. (1997). Inventarios faunísticos de los Coleoptera: Melolonthidae neotropicales con potencial como bioindicadores. *Giornale Italiano di Entomologia*, 8(46), 265-274. URL: <http://guidearchive.blogspot.com/2014/03/n-46-miguel-angel-moron.html>
- Morón, M. Á. (2001). Larvas de escarabajos del suelo en México (Coleoptera: Melolonthidae). *Acta Zoológica Mexicana* (n.s.), 1, 111-130. URL: <https://www.redalyc.org/pdf/575/57500007.pdf>
- Nichols, E., Larsen, T., Spector, S., Davis, A. L., Escobar, F., Favila, M. & Vulinec, K. (2007). Global dung beetle response to tropical forest modification and fragmentation: a quantitative literature review and meta-analysis. *Biology Conservation*, 137, 1-19. DOI: <http://dx.doi.org/10.1016/j.biocon.2007.01.023>
- Ocampo, F. C. (2008). Inventario y conservación de los escarabajos (Scarabaeoidea) de las zonas áridas del sur de América del Sur. *Cuadernos de Biodiversidad*, 26, 13-20. URL: [https://rua.ua.es/dspace/bitstream/10045/6322/1/cuadbid26\\_03.pdf](https://rua.ua.es/dspace/bitstream/10045/6322/1/cuadbid26_03.pdf)
- Otavo, S. E., Parrado-Rosselli, A. & Noriega, J. A. (2013). Superfamilia Scarabaeoidea (Insecta: Coleoptera) como elemento bioindicador de perturbación antropogénica en un parque nacional amazónico. *Revista de Biología Tropical*, 61(2), 735-752. DOI: <http://dx.doi.org/10.15517/rbt.v61i2.11219>
- Pardo-Locarno, L. C. (2002). *Aspectos sistemáticos y bioecológicos del complejo chisa (Coleoptera: Melolonthidae) de Caldoño, Cauca, Colombia* (Master thesis). Universidad del Valle. Cali, Colombia.
- Pardo-Locarno, L. C. (2009). *Macroinvertebrados edafícolas en agroecosistemas del municipio de El Cerrito (Valle), con énfasis en la comunidad de escarabajos Melolonthidae (Coleoptera: Scarabaeoidea)* (Doctoral thesis). Universidad del Valle, Cali, Colombia.
- Pardo-Locarno, L. C. (2013). Escarabajos (Coleoptera: Melolonthidae) del plan aluvial del río Cauca, Colombia I. Ensamblaje, fichas bioecológicas, extinciones locales y clave para adultos. *Dugesiana*, 20(1), 1-15. DOI: <https://doi.org/10.32870/dugesiana.v20i1.4075>
- Pardo-Locarno, L. C., Montoya, J. & Schoonhoven, A. (2003a). Abundancia de chisas rizófagas (Coleoptera: Melolonthidae) en agroecosistemas de Caldoño y Buenos Aires, Cauca, Colombia. *Revista Colombiana de Entomología*, 29(2), 177-184. URL: [http://www.scielo.org.co/scielo.php?script=sci\\_abstract&pid=S0120-04882003000200010](http://www.scielo.org.co/scielo.php?script=sci_abstract&pid=S0120-04882003000200010)
- Pardo-Locarno, L. C., Montoya, J. & Schoonhoven, A. (2003b). Comparación de la abundancia de chisas rizófagas (Coleoptera: Melolonthidae) en agroecosistemas de Caldoño, Cauca, Colombia. En G. A. Aragón, M. A. Morón & A. Marín (Eds.). *Estudios sobre coleópteros del suelo en América* (pp. 65-77). México D.F.: Universidad Autónoma de Puebla.
- Pardo-Locarno, L. C., Montoya, J., Schoonhoven A. & Morón, M. A. (2003c). Composición y riqueza del complejo Melolonthidae (Coleoptera) en cuatro agroecosistemas del Cauca, Colombia. En G. A. Aragón, M. A. Morón & A. Marín. (Eds.). *Estudios sobre coleópteros del suelo en América* (pp. 29-43). México D.F.: Universidad Autónoma de Puebla.
- Pardo-Locarno, L. C., Montoya, J., Belotti, A. & Schoonhoven, A. (2005). Structure and composition of the White Grub complex (Coleoptera: Scarabaeidae) in agroecological systems of Northern Cauca, Colombia. *Florida Entomologist*, 88(4), 355-420. DOI: [https://doi.org/10.1653/0015-4040\(2005\)88\[355:SACOTW\]2.0.CO;2](https://doi.org/10.1653/0015-4040(2005)88[355:SACOTW]2.0.CO;2)
- Pardo-Locarno, L. C., Morón, M. Á. & Montoya Lerma, J. (2006a). Descripción de los estados inmaduros de *Leucothyreus femoratus* Burmeister (Coleoptera: Melolonthidae: Rutelinae: Geniatini) con notas sobre su biología e importancia agrícola en Colombia. *Folia Entomológica Mexicana*, 45(2), 179-193. URL: <https://www.redalyc.org/pdf/424/42445209.pdf>
- Pardo-Locarno, L. C., Vélez, C. P., Sevilla, F. & Madrid, O. (2006b). Abundancia y biomasa de macroinvertebrados edáficos en la temporada lluviosa, en tres usos de la tierra, en los Andes colombianos. *Acta Agronómica*, 55(1), 43-54. URL: <https://www.redalyc.org/articulo.oa?id=169920320005>
- Pardo-Locarno, L. C., Morón, M. A. & Montoya-Lerma, J. (2007). Descripción de los estados inmaduros de *Astaena valida* (Coleoptera: Melolonthidae: Melolonthinae: Sericini). *Acta Zoológica Mexicana* (n.s.), 23(2), 129-141. DOI: <https://doi.org/10.21829/azm.2007.232572>
- Pardo-Locarno, L. C., Ramírez-Pava, B., Villota, H., Villanueva, O. & Bahamon, W. (2011). Ensamblaje de escarabajos Melolonthidae (Coleoptera: Scarabaeoidea) asociados con pasturas en el departamento del Caquetá y su posible relación con la salubridad edáfica. *Acta Agronómica*, 60, 273-284. URL: <https://www.redalyc.org/articulo.oa?id=169922438009>

- Pashanasi, B. (2001). Estudio cuantitativo de la macrofauna del suelo en diferentes sistemas de uso de la tierra en la Amazonia Peruana. *Folia Amazónica*, 12(1-2), 75-97. DOI: <https://doi.org/10.24841/fa.v12i1-2.126>
- Peña, L. A., Bolaños, M. A., Lucero, A. M. & Vallejo, H. (2003). Investigación para el manejo integrado de chisas en fincas de minifundio en los municipios de Yacuanquer y Ospina del departamento de Nariño. *Boletín Técnico Corpoica*, 3, 22.
- Primer-E Ltd. (2006). *PRIMER 6*. <http://www.primer-e.com/> (Last access 29-Jun.-2018).
- Reyes-Novelo, E. & Morón, M. Á. (2005). Fauna de Coleoptera Melolonthidae y Passalidae de Tzucacab y Conkal, Yucatán, México. *Acta Zoológica Mexicana* (n.s.), 21(2), 15-49. URL: <http://www.scielo.org.mx/pdf/azm/v21n2/v21n2a2.pdf>
- Ruiz, D. H. (2007). *Comunidades de macroinvertebrados edáficos en diferentes sistemas de uso de la tierra en la parte media de la cuenca del río Orín, Risaralda, Colombia* (Master thesis). Universidad de La Habana, Cuba.
- Ruiz, B. N. & Posada, L. (1985). Aspectos biológicos de las chisas en la Sabana de Bogotá. *Revista Sociedad Colombiana de Entomología*, 11(1), 21-26.
- Ruiz, B. N. & Pumalpa, N. (1990). Observaciones sobre las chisas (Col: Scarabaeidae). *Revista ICA*, 25(4), 275-282.
- Serna-Patiño, L. M. (2004). *Reconocimiento de especies del complejo chisa (Coleoptera-Melolonthidae) asociadas a los cultivos de yuca y pasto en el municipio de Pereira y alrededores* (thesis). Universidad de Caldas, Manizales, Colombia.
- Smith, A. B. T. (2003). A Monographic Revision of the Genus *Platycolia* Dejean (Coleoptera: Scarabaeidae: Rutelinae: Anoplognathini). *Bulletin of the University of Nebraska State Museum*, 15, 1-202. URL: <https://digitalcommons.unl.edu/cgi/viewcontent.cgi?article=1002&context=museumbulletin>
- Statsoft Inc. (2011). *Statistica 10.0*. <http://statsoft.com> (Last access 29-Jun.-2018).
- Suárez, J. A., Durán, E. H. & Rosas, G. (2015). Macrofauna edáfica asociada con sistemas agroforestales en la Amazonia colombiana. *Acta Agronómica*, 64(3), 214-220. DOI: <https://doi.org/10.15446/acag.v64n3.38033>
- Ulyshen, M. D. & Wagner, T. L. (2013). Quantifying arthropod contributions to wood decay. *Methods in Ecology and Evolution*, 4, 345-352. DOI: <https://doi.org/10.1111/2041-210x.12012>
- Villalobos, F. J., Pulido, R. O., Moreno, C., Pavón, N. P., Hernández, H., Bell, J. & Montiel, S. (2000). Patrones de la macrofauna edáfica en un cultivo de *Zea mays* durante la fase postcosecha en La Mancha, Veracruz, México. *Acta Zoológica Mexicana*, 80, 167-183. URL: <http://www.scielo.org.mx/pdf/azm/n80/n80a9.pdf>
- Villegas, N. P., Gaijl, A. & Vallejo, L. F. (2008). El complejo chisa (Coleoptera: Melolonthidae) asociado a cebolla y pasto en Risaralda, Colombia. *Revista Colombiana de Entomología*, 34(1), 83-89. URL: <http://www.scielo.org.co/pdf/rcen/v34n1/v34n1a11.pdf>
- Walther, A. & Moore, J. L. (2005). The concepts of bias, precision and accuracy, and their use in testing the performance of species richness estimators, with a literature review of estimator performance. *Ecography*, 28, 815-829. DOI: <https://doi.org/10.1111/j.2005.0906-7590.04112.x>
- Zebino, S., Altier, N., Morón, M. Á. & Rodríguez, C. (2008). Evaluación de la macrofauna del suelo en sistemas de producción en siembra directa y con pastoreo. *Agrociencia*, 12(1), 44-55. URL: <http://164.73.52.4/agrociencia/index.php/directorio/articulo/view/177>